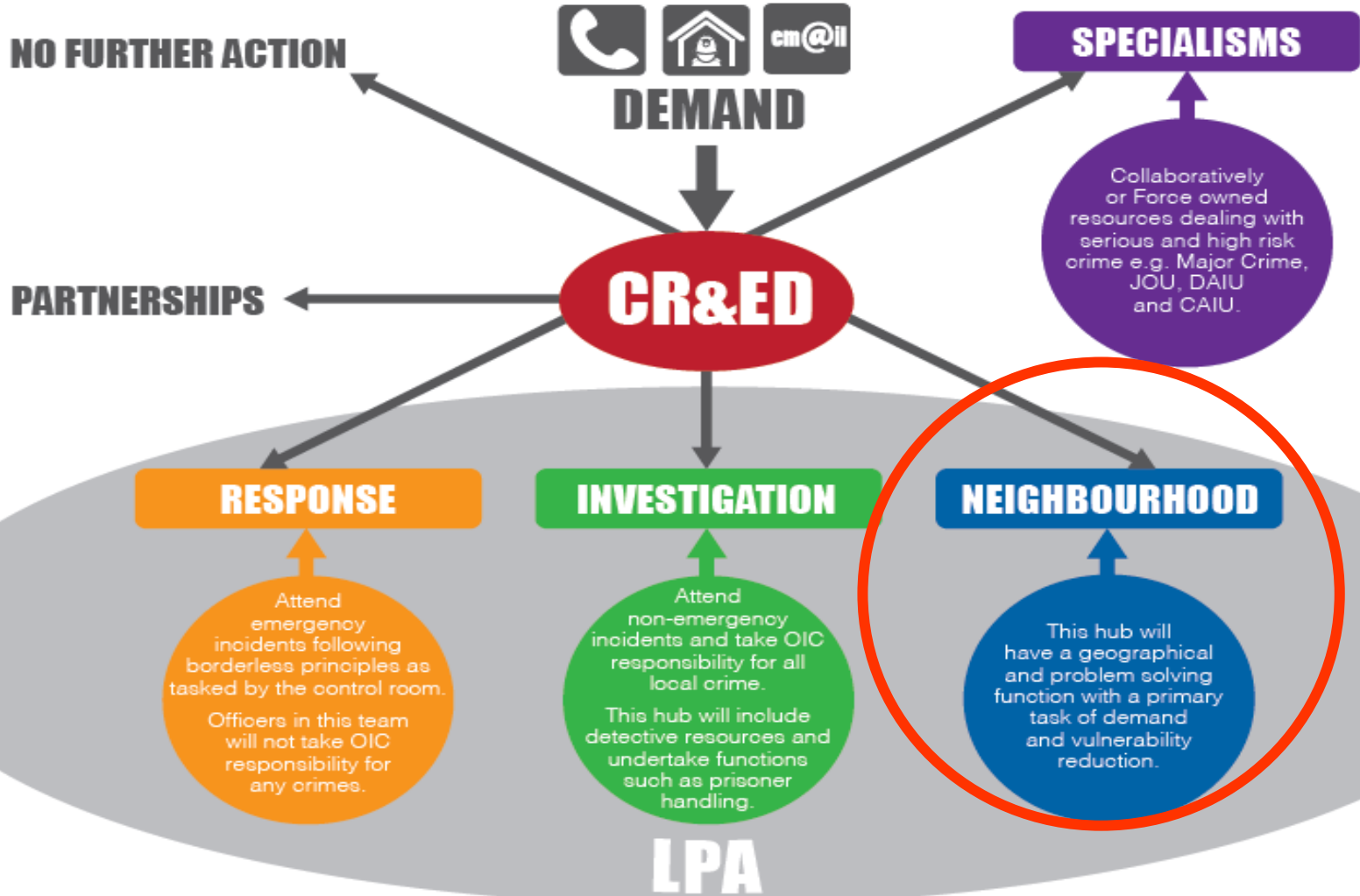


# Policing Issues Forum July 2022

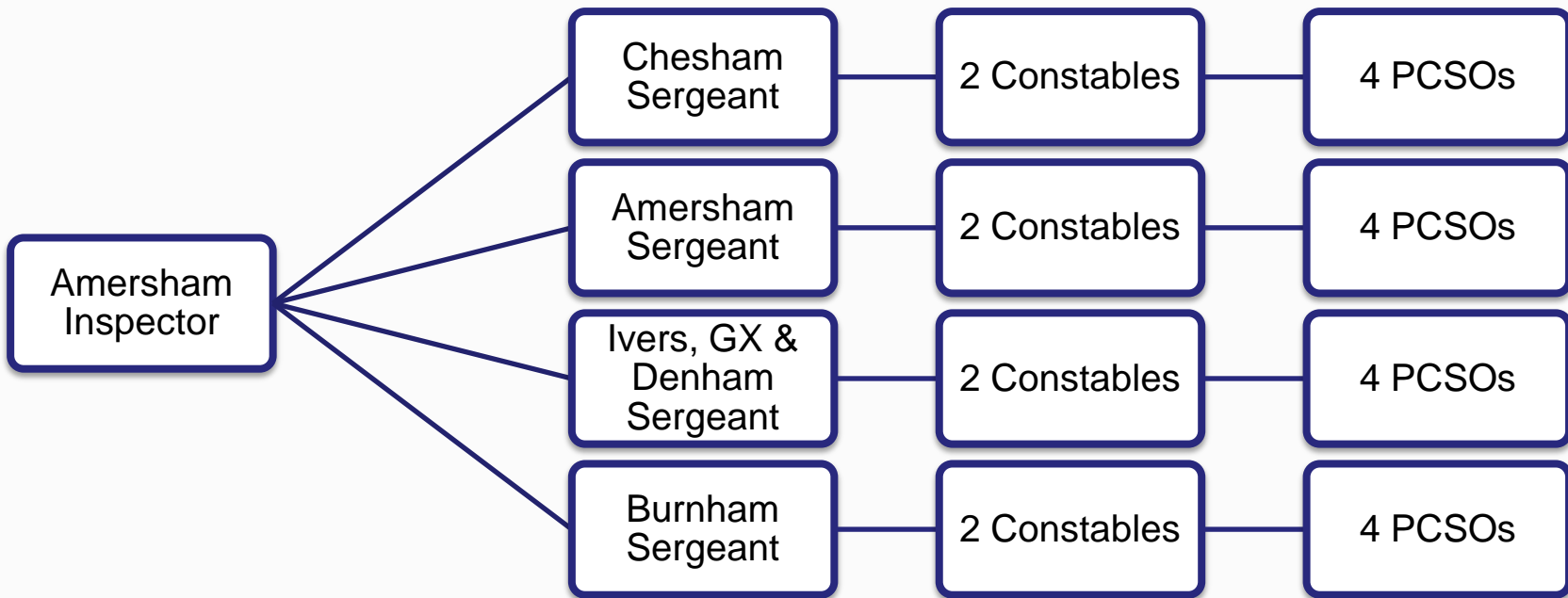
James Ellis  
Neighbourhood Inspector  
South Buckinghamshire Policing Area

# What is “Neighbourhood Policing”?

**THAMES VALLEY POLICE OPERATING MODEL**



## Neighbourhood Policing Team (Amersham sector- establishment) for South Buckinghamshire LPA



# Community Priorities

**Online voting** by the public as to their priorities arranged via Bucks Council and/or PIP



**Neighbourhood Priorities** ratified by Policing Issues Panel – set in **Patrol Plans**

## Community Board Priorities

- Lines of Communication with local Sergeant for quick-time problem-solving outside a formal CB setting
- Policing Issues Panel – independently chaired with CB representatives & TVP Inspectors
- CB Working Groups can support aligned priorities (e.g. CSW, NHW, Shop or Pub Watch, Rural Spotters)
- Physical improvements through CB funding (e.g. CCTV, ANPR, MVAS, road signs, street-side furnishings & layout)
- The widest possible representation within the CB provides better decision-making and can support policing decisions (i.e. LPA Commander's IAG)



**Quarterly Updates** produced as a summary of Patrol Plans and published for the community – akin to a shareholders' report



**Patrol Plans** updated by Neighbourhood teams, to record their daily contribution to priorities

@TVP\_SouthBucks

TVPSouthBuckinghamshire



# The Wider Policing Agenda



Burglary



Modern Slavery



Domestic Violence



Child Exploitation



Cyber-crime



Knife Crime,  
Robbery & Serious  
Violence



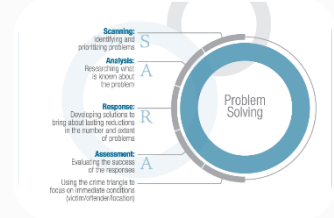
Rural Crime



Organised Crime



Drug Lines



Problem-Solving

## Current Crime Trends

- Broadly, crime levels are gradually returning to pre-pandemic levels.
- However, these pre-pandemic levels had already experienced consecutive years of reduction, and the year-on-year rise to dwelling burglary is only 3%.
- For crime data specific to your area, Quarterly Updates are now published and have been distributed to community boards, TV Alert subscribers, and the Policing Issues Forum. These aim to be a comprehensive summaries for our communities: if you find notable “gaps”, my teams and I are open to feedback.
- Vehicle crime is a notable rise (24%) year on year, as is Robbery (53%). Catalytic convertor theft is a contributor to this rise, as are keyless thefts. Robbery pertains to any theft where violence is used or threatened in its commission, and has contributory factors which include the comparison to a lockdown year, and more robust crime recording; especially concerning weapon-enabled offences.
- The largest rise is Weapon Possession (124%), but this is the result of particular police attention. There has been an intensive scrutiny in recording all incidents where a weapon is suggested, and a corresponding rise in police taking formal action, as a consequence.



# Operation Gallop



TVP South Buckinghamshire @tvp\_southbucks · Jul 3

Following info received about pony & trap racing being planned to take place today the #TVPrural crime taskforce is assisting the neighbourhood & roads policing teams with an operation in #SouthBucks!

We are stopping vehicles suspected 2 be involved & dealing with any offences!



1

5



- Neighbourhood Police are working with Roads Policing and the Rural Crime Taskforce, to respond to public concerns about pony & trap racing.
- Public expectation appears to fall squarely upon the police, yet there are no specific crimes which pertain to this activity.
- Instead, we have adopted an “Achilles Heel” approach, with Road Traffic legislation being our primary legislative toolkit.
- Considering the current policing climate, there is a growing need for communities to explore other means by which to manage such incidents, rather than a sole reliance on police.
- Whilst this issue is most prevalent within a specific community board area, others are occasionally affected. There is certainly opportunity for community groups to assume a more central role in this issue; deciding on how they wish to approach the problem, and coordinating partnership activity in that direction.



**QUESTIONS  
And  
Answers**



[@TVP\\_SouthBucks](https://twitter.com/TVP_SouthBucks)

**facebook**

[TVPSouthBuckinghamshire](https://www.facebook.com/TVPSouthBuckinghamshire)